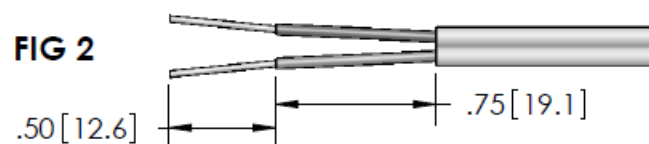


**FIG 1**

T/C TYPE	T/C (+) MATERIAL	T/C (-) MATERIAL	PLUG OR DOT COLOR
K	CHROMEL	ALUMEL	YELLOW
J	IRON	CONSTANTAN	BLACK
C	TUNGSTEN 5% RHENIUM	TUNGSTEN 26% RHENIUM	RED
E	CHROMEL	CONSTANTAN	PURPLE

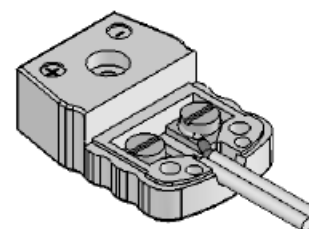
REMOVE PLUG COVER BY LOOSENING SCREWS.



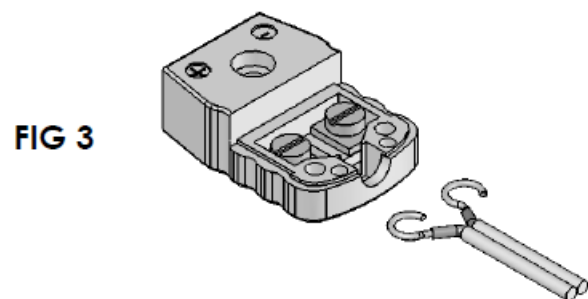
**FIG 2**

CUT AND STRIP THERMOCOUPLE WIRE JACKET AND DIELECTRIC TO DIMENSIONS SHOWN ABOVE. PLUG ACCEPTS STRANDED OR SOLID WIRE UP TO SIZE 20 AWG.

**FIG 4**



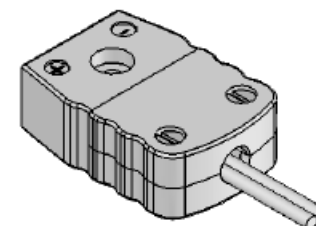
HOOK CONDUCTORS UNDER CONTACT SCREW HEADS AND TIGHTEN MODERATELY.



**FIG 3**

LOOP CONDUCTORS IN A CLOCKWISE DIRECTION AS SHOWN TO FIT AROUND A  $\phi .096$  CONTACT SCREW. LOOSEN CONTACT SCREWS ABOUT 3 TURNS TO ALLOW CONDUCTORS TO BE FASTENED UNDER SCREW HEADS.

**FIG 5**



PLACE COVER BACK ON PLUG AND TIGHTEN SCREWS MODERATELY. BE CAREFUL NOT TO STRIP THE THREADS IN THE COVER.