

COAXIAL CABLES: RG55/U, RG58/U, RG141/U,
RG142/U, RG223/U, RG303/U,
RG400/U

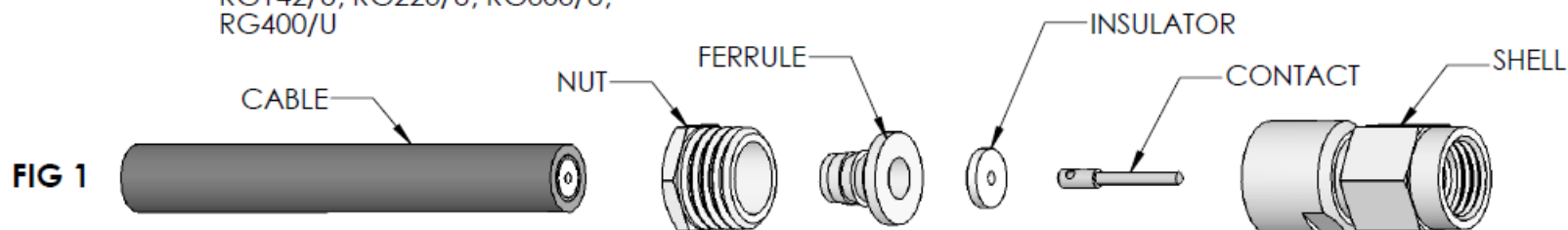


FIG 1

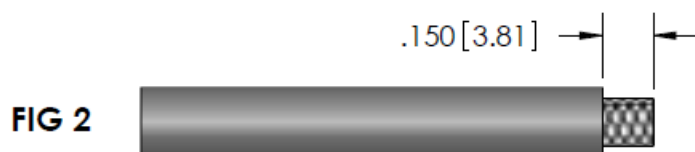


FIG 2

CUT CABLE END SQUARE. CUT JACKET TO
DIMENSION SHOWN ABOVE AND REMOVE.

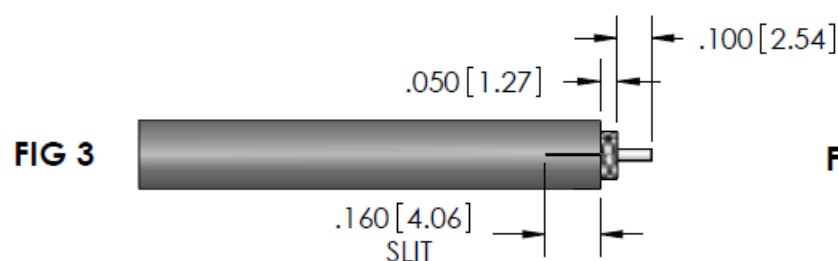
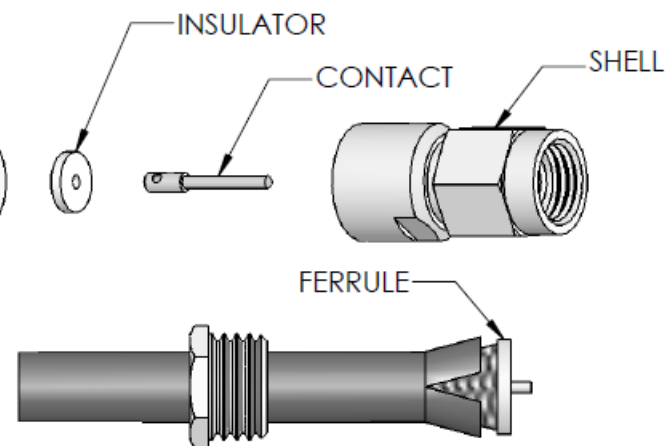


FIG 3

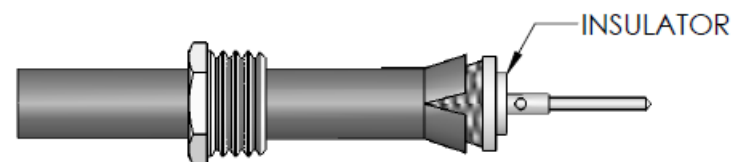
CUT BRAID AND DIELECTRIC AS SHOWN.
SLIT CABLE JACKET TWO PLACES APPROXIMATELY
180° APART. DO NOT NICK BRAID OR CONDUCTOR.
60-40 TIN LEAD SOLDER THE EXPOSED CONDUCTOR.
-DO NOT OVERHEAT-

FIG 4



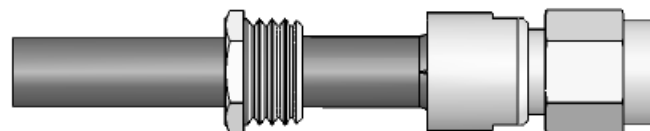
SLIDE NUT OVER CABLE. SLIDE FERRULE OVER
DIELECTRIC AND UNDER BRAID AND JACKET
AS SHOWN. DIELECTRIC AND FERRULE SHOULD
BE FLUSH. CUT JACKET AND BRAID IF NEEDED.

FIG 5



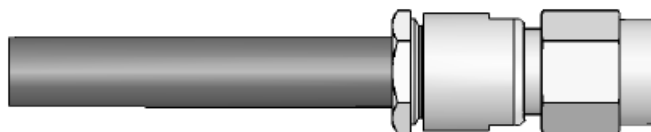
SLIDE INSULATOR OVER CONDUCTOR. SLIDE CONTACT
OVER CONDUCTOR AND SOLDER IN PLACE USING
60-40 TIN LEAD SOLDER. REMOVE EXCESS SOLDER
FROM OUTSIDE OF CONTACT. -DO NOT OVERHEAT-

FIG 6



SLIDE SHELL OVER CABLE ASSEMBLY AND PUSH CABLE ASSEMBLY INTO SHELL UNTIL CONTACT IS FIRMLY SEATED IN SHELL.

FIG 7



SLIDE NUT FORWARD AND WRENCH TIGHTEN 90 TO 100 INCH POUNDS. DO NOT OVER TIGHTEN. MAKE SURE TO HOLD CABLE AND SHELL RIGID WHILE ROTATING NUT.